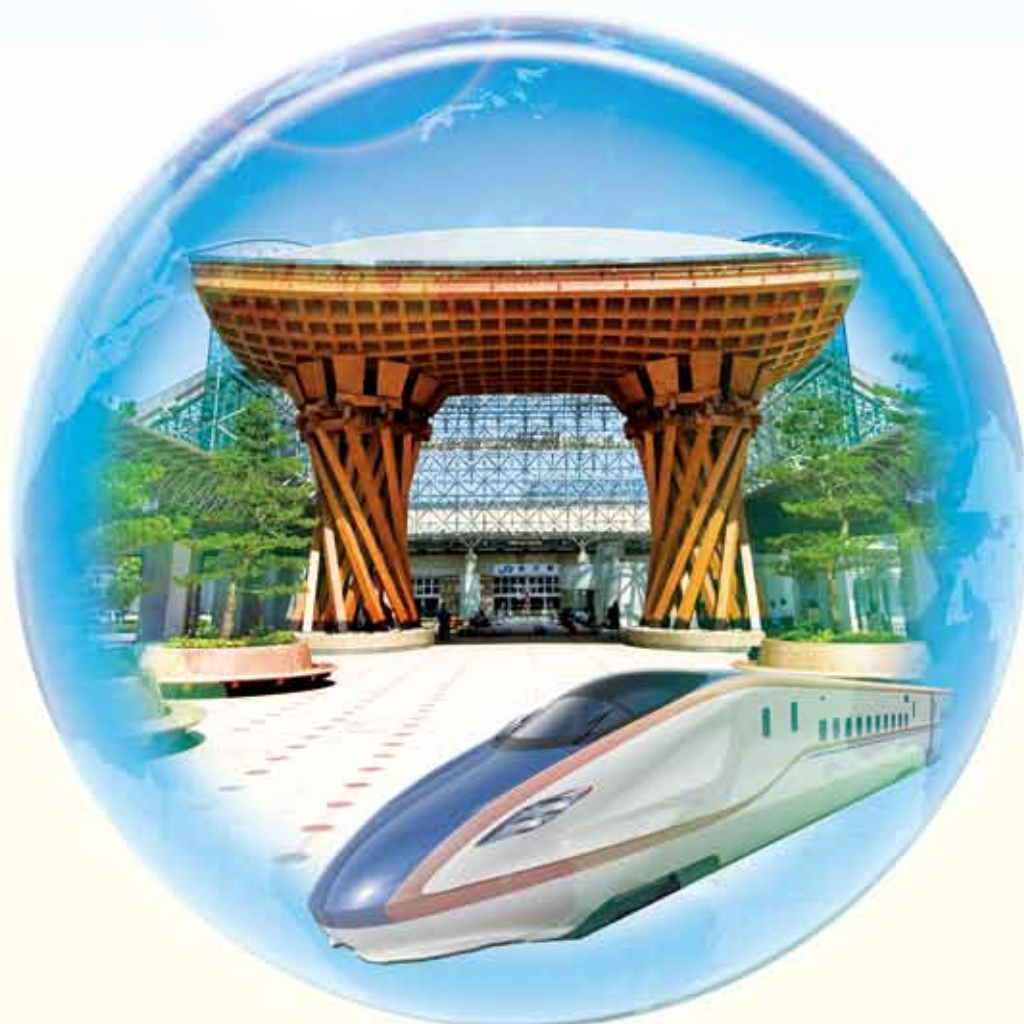


Aiming to Make Kanazawa **a “Hub of International Exchange”**

— digest —



City of Kanazawa

Greetings

In a global society seeking a new order, municipal governments should share their vision for their city with its citizens, and implement it in a strategic way.

Last year, we established a committee to discuss ways to make Kanazawa a city for which people can take responsibility, as well as a city in which they can take pride. Based on comments provided by that committee, we established a new committee this year to discuss prospects for the city and to make proposals. In addition, the opinions of many citizens were collected, and we established our vision of “Aiming to Make Kanazawa a Hub of International Exchange”.

The people of Kanazawa have preserved and cultivated characteristics of the city such as its history, traditions, academic accomplishments and culture. The principles for city planning, which have been handed down through the generations, have made Kanazawa attractive and dignified. This is evidenced by the fact that Kanazawa is on the lists of the League of Historical Cities and the Creative Cities Network, and is rated highly both in Japan and abroad.

With the vision of “Aiming to Make Kanazawa a Hub of International Exchange”, we will proceed to the next step by leveraging the opening of the Hokuriku Shinkansen Super Express Route, while retaining our principles of city planning. We plan to make the most of the values of Kanazawa that have developed so far in order to gather people, things and information from Japan and abroad, to create new values through exchange, and to develop in a sustainable way.

Developing Kanazawa into a ‘Hub of International Exchange’ not only requires the municipal government to be independent; the citizens should be independent as well. It is important for each citizen to be aware of his or her role and relationships with other people in society. By cooperating with one another, we will be able to make Kanazawa a proud city.

We hope that this vision for the city will enhance people’s interest and understanding of city planning, and promote collaboration between the government and citizens. In parallel, we will endeavor to establish an environment to make Kanazawa a city that provides opportunities for many people.

Lastly, I would like to express my appreciation to the citizens who provided their input, and to all of the people involved in the establishment of this vision for their support and cooperation.

March 2013

Yukiyoshi Yamano

Mayor of Kanazawa

1 Trends of the Times

- The 2011 Great East Japan Earthquake clarified contradictions in our civilized society.
- Ways of life and society changed.
- We became more interested in the planning of a safe, secure city, and in recyclable energy.
- We now require a society that enables us to live a rich life in a humane manner.
- Local governments are increasingly expected to play an important role in creating new values, something that is difficult for the national government to accomplish.

2 Features of Kanazawa

Location

With the completion of the Hokuriku Shinkansen Super Express railway line to Kanazawa, Tokyo will be included in the area within a two-and-a-half-hour ride.

As Kanazawa is located in the center of the coastal area along the Sea of Japan, it has an advantage with regard to exchanges with South Korea, China and other countries in East Asia.

Dignity

Kanazawa has developed through the use of its distinct historical, traditional, academic and cultural features.

Kanazawa is on the lists of the League of Historical Cities and the Creative Cities Network, which has given the city dignity.

Industries

Kanazawa has abundant traditional arts and crafts, as well as a unique industrial structure, which includes many fields that are well coordinated with regard to exchanges of people, goods and information.

Our unparalleled craft techniques are competitive on the world market.

Exchanges

Hokuriku Expressway and Tokai-Hokuriku Expressway have the potential to become new golden routes for sightseeing in Japan.

The city's excellent creativity in academic fields, architecture and contemporary art gives it the potential of becoming a center for sightseeing.

Community

Kanazawa has had a long tradition of autonomy since feudal times, and its citizens have a deep attachment to the city and awareness of the necessity for cooperation.

The citizens' sense of solidarity and cooperation originates from the vibrant activities of town councils and community centers, as well as activities for welfare and disaster prevention.

3 Kanazawa's Agendas

1 Response to the age of Shinkansen Super Express

We should construct an active community and leverage Shinkansen Super Express to full advantage in order to attract more visitors to our city.

2 Promotion of exchanges

We should promote exchanges with the cities and towns along the Hokuriku Shinkansen line, and with the members of the UNESCO Creative Cities Network.

3 Enhancement of urban functions in the central area

We should enhance the urban functions of the districts along the main axis of the city, as well as the functions for gatherings and exchanges among people.

4 Shift to an environment-friendly city

We should renounce a lifestyle based on excessive energy consumption, by making it possible for people and nature to coexist.

5 Construction of a safe city

We should also aim to construct a city where people can live safely without having to worry, by preparing for great natural disasters.

6 Establishment of new communities

We should establish a new type of community that values people's ties and cooperation.

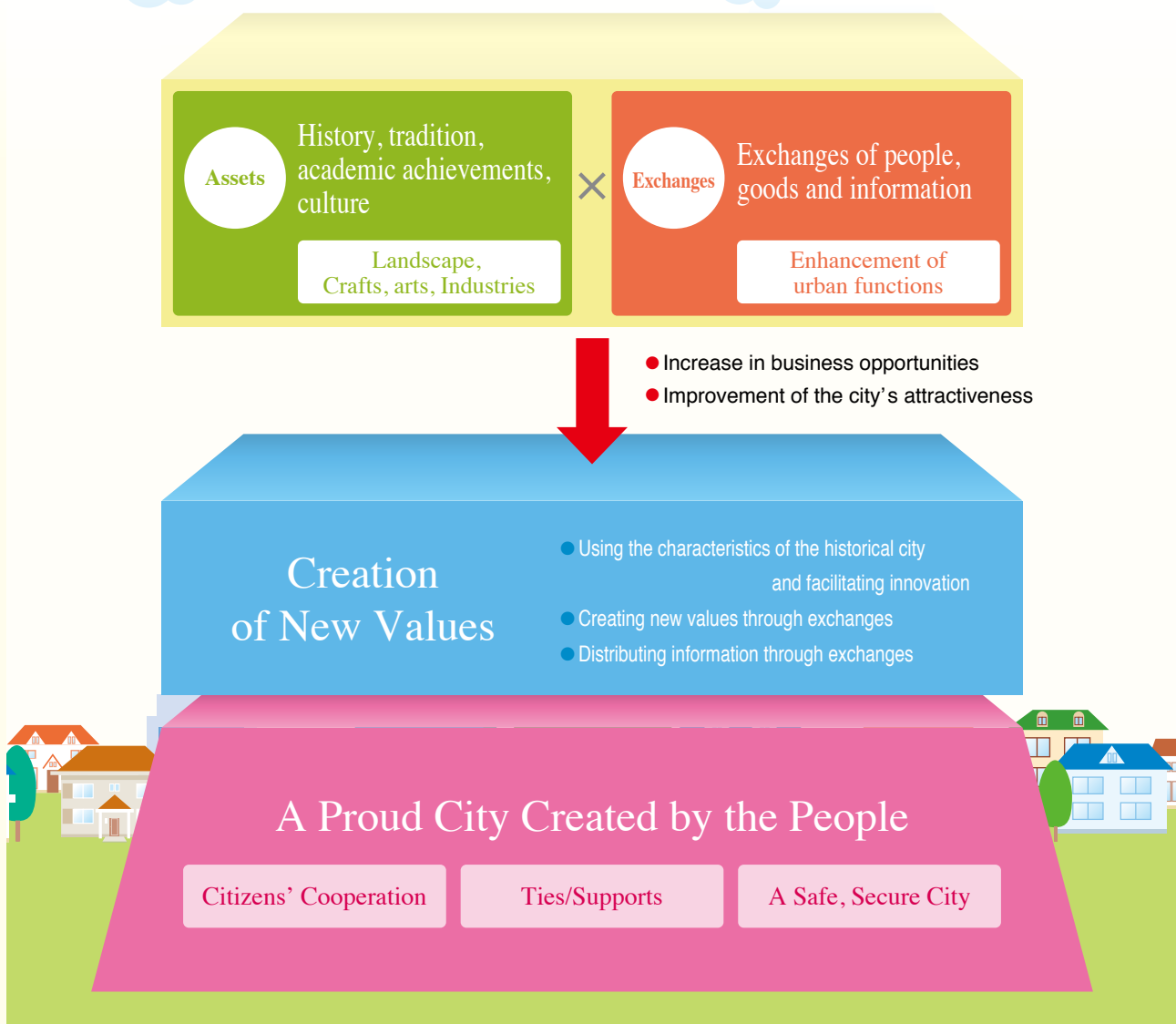
I

Prospects for Kanazawa

Making Kanazawa a “Hub of International Exchange”

— A Proud City Created by the People —

The City of Kanazawa has preserved and enhanced its **distinctive, incomparable assets in academic and cultural fields**. The city now needs to **maintain those assets and create new, characteristic values**. To that end, it is most important to **make the city a hub of exchange for people, goods and information**. We aim to make our city a “hub of international exchange”.



III Main Policies

Aiming to Make Kanazawa
a “Hub of International Exchange”

In order to become a hub of international exchange while responding to changes of the times, we must enhance our functions for international exchange by using the advantages we have developed.



1 Industry creation

- Enhancement of the city's functions as the basis of an exchange network
- Creation of new industrial fields
- Expansion of business opportunities



2 Academic culture

- Cooperation with local institutions of higher education
- Improvement of facilities for international conventions
- Invitation of MICE
(Meeting, Incentive, Convention/Congress and Event/Exhibition)



3 Tourism

- Development of sports facilities for international exchanges
- Setup of attractive wide-area sightseeing routes
- Increase in evening tourist attractions



4 Transportation infrastructure

- Expansion of the transportation network
- Enhancement of international distribution centers
- Improvement of international tourist attractions



5 Communities

- Citizens' engagement in city planning
- Enhancement of the functions for lifelong learning
- Exchanges among regions and generations



IV Principles

We have agreed on seven principles that are to be indispensable elements in our city planning.



Attractiveness

Enhancement of the cities' features

We will preserve traditions and achievements in academic and cultural fields that have been handed down since feudal times, while enhancing the characteristics and attractiveness of Kanazawa. This will be realized by enhancing the city's function as a focus of various networks as a member of the UNESCO Creative Cities Network.

Development through tradition and creation

- Use of historical and cultural assets
- Promotion of a creative city
- Preservation and development of traditional culture
- Creation and distribution of new cultures

Use of assets in academic fields and tourism

- Invitation of MICE
- Enhancement of tourism
- Promotion of sports
- Use of the accomplishments of institutions of higher education



Creating the city

Enhancement of urban functions

We will construct a dignified cityscape that is in harmony with people's lives, and improve the urban functions of the districts along the main axis of Kanazawa, which includes Korinbo and Katamachi. We will also improve the transportation network and information infrastructure to enhance the function of the city as a hub.

City with dignity and functionality

- Promotion of a city with dignity
- Urban functions integrated in a compact area
- Well-harmonized urban structure
- Promotion of commerce
- Establishment of a transportation network
- Establishment and enrichment of an information infrastructure

Hub functions

- Improvement of the wide-area transportation infrastructure
- Improvement of roads
- Improvement of regional transportation networks



Creating things

Creating dynamism

We aim to vitalize manufacturing industries, and distribute information about advanced technologies in Kanazawa in order to increase markets, support entrepreneurs and attract companies to the city. As for agriculture and forestry, we support workers engaged in these fields, create Kanazawa Brand and vitalize mountainous areas.

Global networks

- Promotion of craft industries
- Vitalization of manufacturing
- Support of entrepreneurs
- Invitation of companies

Sustainable development of agriculture and forestry

- Promotion of agriculture
- Promotion of forestry
- Use of mountainous areas



Use of mountainous areas by citizens

Creating people

Creating the future

We will improve environments for raising children by increasing subsidies, creating balance between private life and work, and promoting education so that people can appreciate their city and be proud of it. We will also implement measures to produce young people who will play an important role in manufacturing, culture, the arts, and regional activities.

Rich human nature

- Improvement of environments for raising children
- Promotion of unique education

Raising the next generation

- Training of young people in various industries
- Training of young people who will be engaged in regional activities



Creating environments

Living with nature

We will introduce recyclable energy, promote an ecological lifestyle, and reuse waste in order to decrease the impact on the environment. We will preserve water quality, natural environments, fields and forests in order to coexist with the nature.

Environment-friendliness

- Independence in energy
- Formation of a recycling-oriented society
- Promotion of ecological activities

Providing a comfortable life

- Preservation of a safe and comfortable living environment
- Preservation of the natural environment
- Preservation of the versatile functions of agricultural land and forests



Introduction of recyclable energy

Creating a lifestyle

Living safely

We will establish a system to decrease disaster damage by securing lifelines and increasing people’s awareness of disaster prevention. We will promote activities to help people lead a healthy life, both mentally and physically, and improve welfare for the elderly, as well as regional medicine.

Disaster Preparedness

- Establishment of a disaster-response system
- Enhancement of the system for fires and emergency medicine

Healthy life

- Support for handicapped people
- Support for mental and physical health
- Cooperation and enrichment of health , medical and welfare hubs



Development of disaster prevention facilities

Creating ties

Promoting cooperation

We will produce people who will carry out city planning cooperatively, and promote city planning through the creativity and fresh ideas of students. We will improve functions for lifelong learning in order to facilitate communication between the generations, and promote the elderly’s participation in society.

Regional communities

- Promotion of citizens’ cooperation
- Promotion of students’ regional activities
- Support of community activities
- Establishment of a system to help people remain active throughout their lives

Independence of the city

- Improvement of government services
- Establishment of sustainable administrative and fiscal foundations



Kanazawa Student Community Civic Center



For inquiries

Kanazawa City

TEL:076-220-2031

FAX:076-264-2535

1-1-1 Hirosaka, Kanazawa, Ishikawa 920-8577

E-mail: kikaku@city.kanazawa.lg.jp